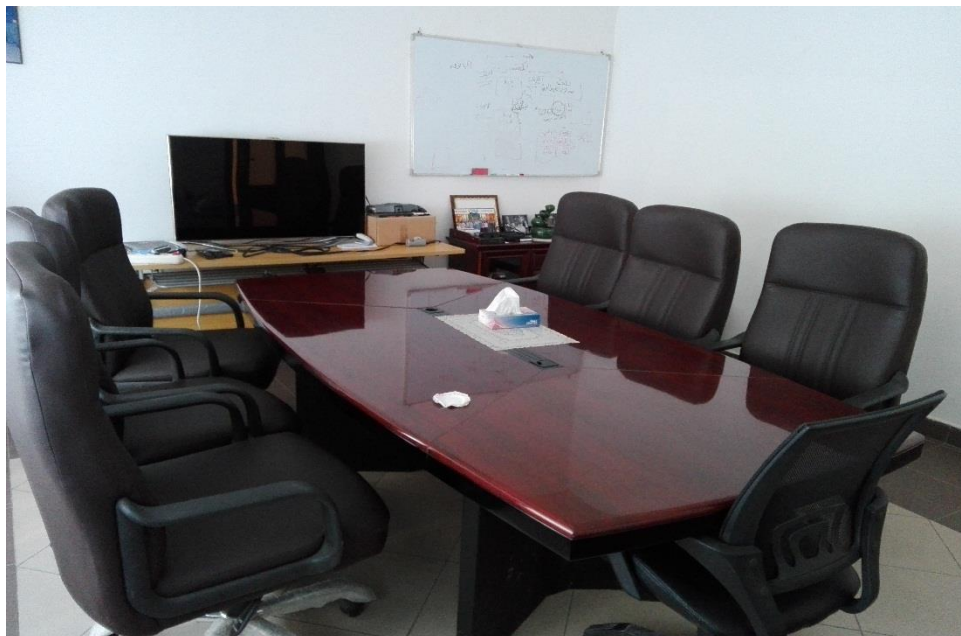


Meeting Room (Ground Floor)

Room Size	Room size: 498 x 458 cm	Type: Meeting
Usage	<ul style="list-style-type: none"> • Meeting • Video conference 	
Room Layout	<ul style="list-style-type: none"> • Meeting style 	
Max Persons	10 with 1 meeting table	
Average Persons	8	
Facilities	Projector - Whiteboard - Copier - Smart Samsung Screen 46" - Apple TV +3D Glasses - Desktop video Conference - External Mic & Speakers - receiver Humax-voip system - Ericson antenna – USB camera	



Room (1) (Ground Floor)

Room Size	Room Size: 484 x 987 cm	Type: Individual / Incubator
Usage	<ul style="list-style-type: none"> • Study 	
Room Layout	<ul style="list-style-type: none"> • 7 individual Fixed Desks 	
Max Persons	14 (desk shared by 2)	
Average Persons	7	
Facilities	Printer – Digital Center	



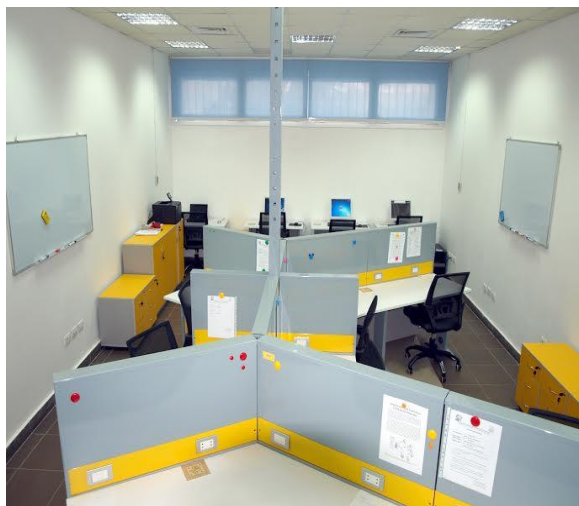
Room (2) (Ground Floor)

Room Size	Room size: 480 x 980 cm	Type: Individual / Incubator
Usage	<ul style="list-style-type: none"> • Study 	
Room Layout	<ul style="list-style-type: none"> • 9 individual Fixed Desks 	
Max Persons	18(desk shared by 2)	
Average Persons	9	



Proposal Writing Room (Ground Floor)

Room Size	Room size: 971 x 481 cm	Type: Incubators
Usage	<ul style="list-style-type: none"> • Proposal Writing • Exams 	
Room Layout	Partition A: 3 Partition B: 3 Partition C: 3	Partition D: 3 Partition E: 3 Partition F: 3
Max Persons	3 persons per Partition	
Average Persons	Partition A: 3 Partition B: 3 Partition C: 3	Partition D: 3 Partition E: 3 Partition F: 2
Facilities	Printer - 3 whiteboards - Color printer - MFPrinters (Scanners - Copier - Printer) Black / White Printer 3x Workstations (2x windows , 1x Centos) HP Pavillion dv6 Laptop	



Class Room A (First Floor)

Description	<p>Room size:</p> <ul style="list-style-type: none"> No Stage: 470 x 990 cm (47 sq. m) With Stage: 470 x 810 cm (38.5 sq. m) 	<p>Type: Meeting room</p>
Usage	<ul style="list-style-type: none"> Talk / Seminar Meeting Workshop 	
Room Layout	<ul style="list-style-type: none"> Theater Meeting style U Shape 	
Max Persons	<p>30 (without tables) From 12 to 20 (with tables)</p>	
Average Persons	<p>12</p>	
Facilities	<p>Flow chart for Data show - Data show - Whiteboard - Video conference - Projector - Video Conference with Sound System - Monitor 52" and all needed Accessories</p>	



Class Room B (First Floor)

Room Size	Room size: 980 x 515 cm (48 sq. m)	Type: Meeting room
Usage	<ul style="list-style-type: none"> • Talk / Seminar • Meeting • Workshop 	
Room Layout	<ul style="list-style-type: none"> • Theater • Meeting style • U Shape 	
Max Persons	30 (without tables) From 12 to 20 (with tables)	
Average Persons	12	
Facilities	Whiteboard - Projector - Smart Board - External Mic & Speaker Video Conference with sound system - Monitor 55" and all needed Accessories - Flip Chart	

